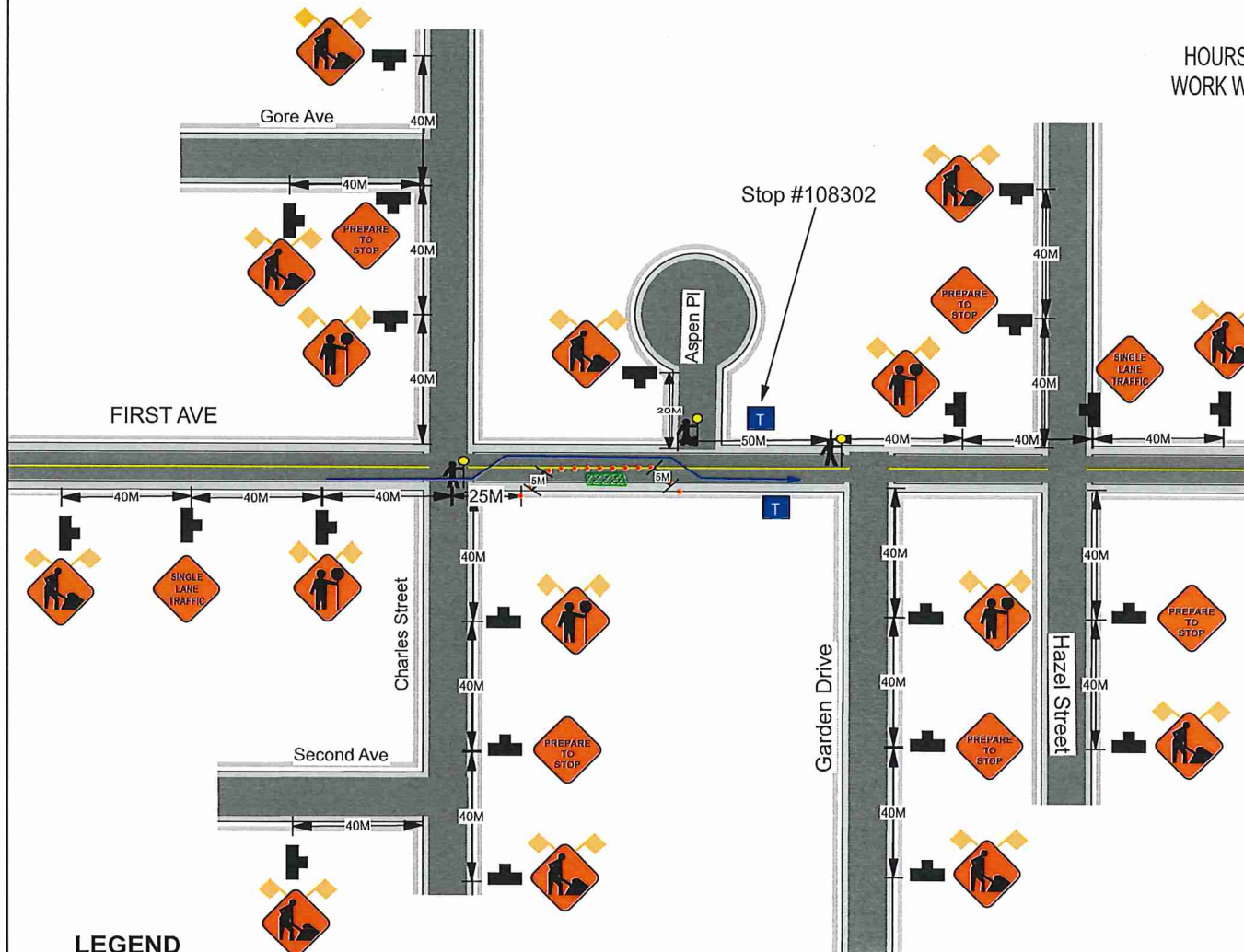




APRIL - MAY 2019
 HOURS OF OPERATION 9:00AM - 3:00PM
 WORK WILL TAKE ONE DAY TO COMPLETE



NOTE:

- ALL SIDEWALKS - CROSSWALKS WILL REMAIN OPEN
- TRAFFIC CONTROL WILL ASSIST WITH DRIVEWAYS AFFECTED BY WORK ZONE CLOSURE
- SPEED LIMIT ON FIRST AVE IS 50 KM PER HOUR
- ALL SIGNS WILL BE PLACED ON TRIPOD STANDS WITH FLAGS
- ADVANCE WARNING SIGNS WILL BE PLACED ON ALL INTERSECTING SIDE STREETS WHEN REQUIRED
- BUS STOP # 108302 WILL BE CLOSED
- CMBC WILL BE CONTACTED 3 DAYS PRIOR

LEGEND

- DIRECTION TRAFFIC FLOW →
- TUBULAR MARKERS ●●●●●
- WORK AREA
- SIGN STANDS
- TRAFFIC CONTROLLER
- BUS STOP